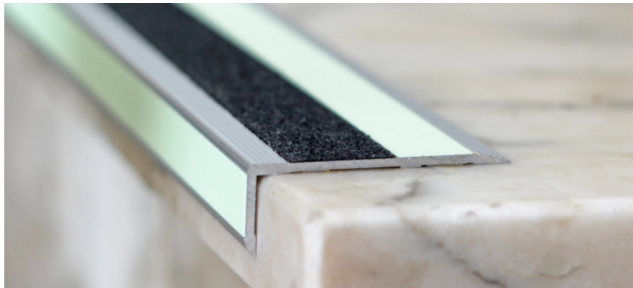


New Products: Photoluminescent Egress Path Markings with Enhanced Fall and Slip Prevention Features

A building safety officer faces two challenges in providing an effective safety solution for the building users who need to circulate in stairwells:

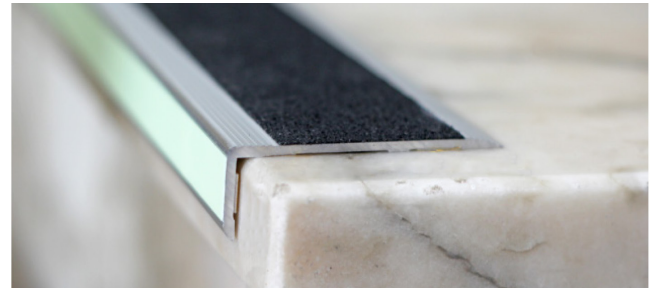
- It is essential to effectively mark every step to assure their immediate identification during an emergency, in which a blackout or the presence of smoke may occur.
- Additionally, it is also necessary to protect the users from possible slips, trips and falls which may occur from the daily use of stairwells.

Everlux is now launching its new stair nosing options, as a supplement to its existing solutions, combining photoluminescent markings with enhanced anti-slip properties, developed with the most demanding applications in mind.



Combined stair nose

L 03 28



Anti-slip stair nose

L 03 29

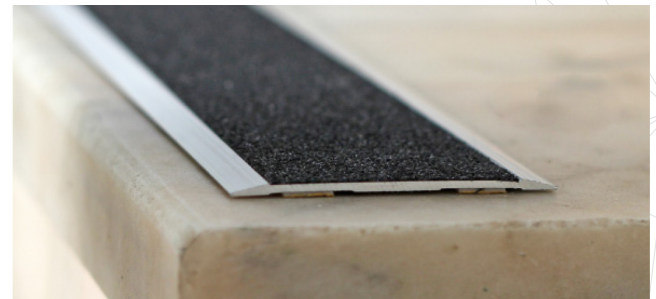
These new products are more suitable for places where, given the type of use or the actual construction features, a higher anti-slip grade solution is required. Steeper and narrower stairwells and places with higher slipping risks are some of the examples of such applications.

Everlux also developed new flat aluminium profile solutions with enhanced anti-slip characteristics. These new profiles are intended to be used on uneven floors where it is also required the use of a higher anti-slip grade solution, or where an anti-slip and photoluminescent combined product may offer a decisive contribution to reduce the slipping hazard and to improve the evacuation marking conditions.



Combined flat profile

L 71 82



Anti-slip flat profile for floors

L 71 83